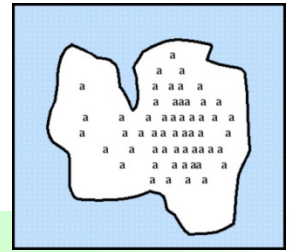


# Human Geography

*the study of human activities from a spatial context*

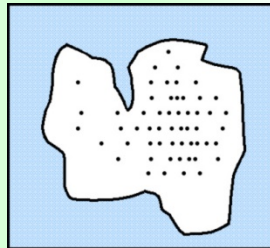


## NATURE AND PERSPECTIVES OF GEOGRAPHY

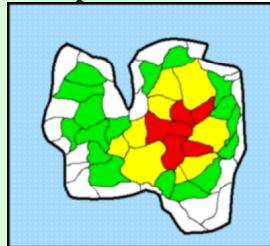
- ❖ **Human Geography** the study of human activities from a spatial context
- ❖ **Basic Ideas of Geography**
  - All places have location, direction, and distance with respect to other places
  - Places may be large or small; the scale is important
  - Places have both physical structure and cultural content
  - The characteristics of places develop and change over time
  - The elements of places interact with other places
  - The content of a place is rationally organized
  - Places may be classified into regions with similarities and differences
- ❖ **Location**
  - Position on the Earth's surface.
  - **Absolute Location**
    - ◆ The exact position of a place
    - ◆ Latitude and longitude - used to describe a point on earth in reference to degrees, minutes, and seconds
  - **Relative Location**
    - ◆ The position of a place in relation to the position of another place
    - ◆ Conveys interconnection and interdependence between different places
  - **Site**
    - ◆ Describes the physical and cultural characteristics of a location
  - **Situation**
    - ◆ Describes where a location is in reference to surrounding features in the larger region
  - **Scale**
    - ◆ Relationship between the size of a feature as depicted on a map and the size of the feature in actuality
- ❖ **The 4 Traditions of Geography- American Perspectives**
  - **Spatial Tradition**
    - ◆ Emphasis on movement and location
    - ◆ Deals with the shape of the land

- **Area Studies Tradition**
  - ◆ Emphasis on region, place and history
  - ◆ Deals with physical and cultural characteristics
- **Man-Land Tradition**
  - ◆ Emphasis on the relationship between external conditions and human actions
  - ◆ Overlaps with the Area Studies Tradition
- **Earth Science Tradition**
  - ◆ Emphasis on geology
  - ◆ Deals with how physical systems affect humans (hydrological cycle, wind patterns, etc)
- ❖ **Maps and Map Types**
  - **Map** a two dimensional representation of variables on the earth's surface
    - ◆ **Thematic Map** represents a single variable over an area

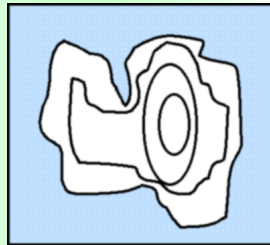
- **Dot**



- **Choropleth**



- **Isoline**



- **Symbol**

- ◆ **Mental Map** an image in one's mind about an area, location, or environment
- ◆ **General Purpose/Reference Maps** display a variety of variables in an area
- ❖ **Region** an area with unifying characteristics
  - **Formal** an area that can be identified by its homogeneous cultural or physical characteristics
  - **Functional** an area in which there is a center from which social or economic activities spread
  - **Perceptual** an area not defined by any set of physical data, but by human conception of the area

## BASIC GEOGRAPHIC MODELS AND CONCEPTS

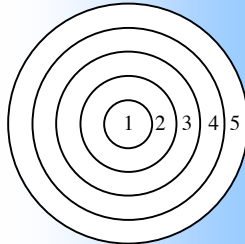
- ❖ **Cultural Change Theories**
  - **Environmental Determinism** belief that the physical environment is solely responsible for shaping human actions and behaviors.
  - **Possibilism** belief that people, and not the environment, are the forces responsible for shaping culture.
- ❖ **Economic Development Models**
  - **Rostow Model** 1950s; gauge of economic development, based on *western* point of view. Contains 6 stages of development.
    - ◆ Traditional Societies
    - ◆ Preconditions for Takeoff
    - ◆ Takeoff
    - ◆ Drive to Maturity
    - ◆ Age of Mass Consumption
    - ◆ Post Industrial (theoretical/debatable)
  - **World Systems Model** 1970s; as opposed to the ROSTOW MODEL, this model looks at economic development based on the relationships between countries – the *core* consists of the economically dominant partners; the *sub-periphery* and *periphery* are less dominant and typically contain more basic level employment; they are reliant upon the core.
- ❖ **Economic Sectors**

- **Primary Sector** agricultural and extractive activities. Relied upon by many developing nations.
- **Secondary Sector** processing activities – manufacturing, construction and power production. Many developing nations support secondary activities with lower labor costs than developed countries.
- **Tertiary Sector** service activities. Many developed countries' economies are dominated by tertiary sector jobs.
- **Quaternary Sector** informational activities. The **Quinary Sector** is a new theoretical sector within the quaternary sector of high level management jobs.

❖ **Economic Spatial Models/Concepts**

- **Gravity Model** H. Carey; the laws of gravity are applicable in describing the attractive force that exists between two areas (cities). Large cities have greater drawing power for people than small cities. There is a breaking point for each city beyond which people will not be drawn to the city to meet their needs.
  - ◆ **Distance Decay** a term linked with the GRAVITY MODEL. Describes the decline of attractive pull something has with increasing distance from the point of origin.
- **Central Place Theory** W. Christaller; 1930s; a central place is a market center used for an exchange of goods and services. People are attracted to a central place from the surrounding area. The competition between central places creates a regular pattern of settlements. Larger settlements are fewer and farther apart; they exist to provide a greater variety of services and specialized goods (the symphony, museums) that people are willing to travel a greater distance for.
  - ◆ **Threshold** minimum number of people needed to support a product or activity
  - ◆ **Range** distance people are willing to travel for a product or activity
- **Von Thunen's Model** J. H. von Thunen; 19<sup>th</sup> century; describes the relationship between distance from market and land use. There are four concentric rings around a central market. Products grown inside each of the rings are determined by the

crop's *transport gradient*. Perishable items like fruits and vegetables face higher transport rates, while the transportation rates for commodities like grain are less. In the 1<sup>st</sup> ring, dairying and market gardening occur since these products are perishable and generate high transport costs. The 2<sup>nd</sup> ring around the center produces cash grains and livestock. Mixed farming occurs in the 3<sup>rd</sup> ring, and extensive grain farming and stock raising occurs in the farthest ring.

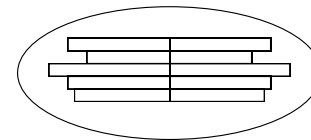


1. Market
2. Dairying (Perishable)
3. Cash Grain
4. Mixed Farming

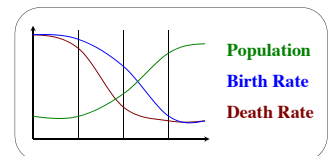
5. Extensive Grain Farming; Stock Grazing

- **Least-Cost Theory** A. Weber; used to discover the optimum location of an industrial/manufacturing establishment. Weighs three basic expenses against each other to try to determine the best location: *relative transport costs*, *agglomeration costs*, and *labor costs*.
- ❖ **Geopolitical Theories** Concerned with strategic advantage and the balance of political, economic and military power on the earth's surface.
  - **Sea Power Theory** Mahan; late 1800s; argued that control of the sea lanes would lead to national strength.
  - **Heartland Theory** MacKinder; early 1900s; based on land power. Believed that the best base for world domination would be the Eurasian Heartland.
  - **Rimland Theory** Spykman; 1944; based on coastal power. Reasoned that the best base for global conquest would be the Eurasian Rimland.
- ❖ **Place Utility when used in relation to**
  - **Migration** the perception of a place
  - **Economic** the value of a good or service determined by transportation to a specific location where needed
- ❖ **Population Growth Theories**
  - **Malthus' Theory**
    - ◆ Population grows exponentially while its food supply grows linearly. A population is therefore limited by its food supply.
    - ◆ Checks that keep population in balance with subsistence methods are either "private" (moral restraint, celibacy) or "destructive" (war, pestilence, famine).
    - ◆ **Neo-Malthusianism** rose from Malthus' original theory; consists

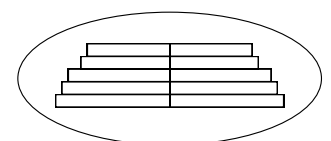
of the advocacy of population control programs to preserve and improve general national prosperity and well-being.



- **Boserup's Thesis** E Boserup; contradicts Malthusianism. States that, as a population increases, the necessity to produce more will be met using technology. Population growth forces an increase in technology in the farming industry.
- ❖ **Population Models/Concepts**
  - **Demographic Transition Model** A model that evaluates economic development by examining population patterns. The model consists of 4 stages. Stage One is characterized by high birth rates and high death rates. In Stage Two, death rates decline but there is still a high birth rate. In the third stage, birth rates also begin to decline as people begin to control family size. The fourth stage is characterized by very low birth and death rates with only a slight percentage of total population increase, if any. This model is based primarily on countries that followed the European model of industrialization. Countries usually follow a linear, progressive path through the model. This model does not include immigration data.

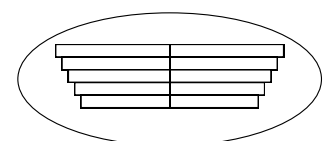


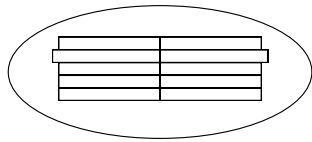
- **Population Pyramid** a graph that



represents a population by age and sex. Population pyramids include immigration data.

- ◆ **Growth** this shape indicates high birth and low death rates
- ◆ **Stability** this shape indicates low birth and death rates





- ◆ **Decline** this shape indicates low death rates and very low birth rates
- ◆ **Disruption** this shape indicates irregular birth and death rates

- ❖ **Ravenstein's Laws of Migration** E.G. Ravenstein; 1970s-80s; a series of theoretical laws about migration. These laws include the following ideas:
  - Most migrants travel only a short distance
  - Most migration is rural to urban
  - Most international migrants are young males
  - Each migration flow produces a counterflow
  - Most migration occurs in steps
- ❖ **Urbanization Models/Concepts**
  - **Central Business District (CBD)** centralized core of the city, generally center of finance and government
  - **Concentric Zone Model** E. Burgess; 1923; a generalized model of urban growth and land use that varies slightly from the SECTOR MODEL. A city grows outward in a series of rings from the CBD (the 1<sup>st</sup> zone). The 2<sup>nd</sup> ring, around the CBD, is called the *Zone of Transition* (industry, poor housing); the 3<sup>rd</sup> ring is called the *Zone of Working-Class homes* (older homes - independent working-class); The 4<sup>th</sup> ring is called the *Zone of Better Residence* (middle class); the 5<sup>th</sup> ring is called the *Commuter's Zone*, and it consists of people who work in the CBD but commute there from the outer edges of the city (suburbs).
  - **Sector Model** H. Hoyt; 1939; a generalized model of urban growth and land use patterns. The CBD is in the direct center. Wholesale manufacturing and low class residential housing areas are located next to the CBD but extend outward from it along a major transportation route. The outer edges are a mix of medium-class and high class housing.
  - **Multiple Nuclei Model** C. Harris & Ullman; 1945; another generalized model of urban growth and land use patterns. The CBD is not in the exact center. The city spreads outward from more than one node of growth. There are several other small centers from which growth

occurs. There is a CBD, a wholesale manufacturing area, a low-class residential area, a medium-class residential area, a heavy manufacturing area, an outlying residential area, residential suburb, and an industrial suburb

- *Note: the models for urban areas defined above are based on United States cities; cities in other areas of the world have their own models*

## POPULATION GEOGRAPHY

- ❖ The study of population characteristics is defined as demography. This includes the growth, composition, and distribution of the population.
- ❖ **Population Concepts**
  - **Net Population Growth** number of deaths and the number of emigrants subtracted from the number of births added to the number of immigrants from a place per 1,000 people; it may be positive, negative, or zero
  - **Birth Rates** number of live births per 1,000 people annually
  - **Infant Mortality Rate** number of deaths per 1000 live births of babies up to 1 year of age
  - **Death Rate** number of deaths per 1,000 people annually
  - **Rate of Natural Increase (RNI)** derived from subtracting crude death rate from the crude birth rate, does not account for immigration/migration
    - ◆ **Replacement Level** 2.1 RNI; the necessary level for a population to sustain itself but not grow or decline
    - ◆ **Doubling Time** the time it would take for the country's population to double at its current RNI
  - **Total Fertility Rate** average number of children a woman will have during her reproductive years; assumes the same rate for all women of 15 to 50 years of age
  - **Dependency Ratio** number of dependents (under 15 and over 65) to number of productive people (ages 15-65)
  - **Migration** the movement from one location to another with the intent of staying in the new location
    - ◆ **Step** long distance relocation completed in stages
    - ◆ **Chain** pattern or path of movement from one location to another specific location initiated by (an) individual(s) and followed by others such as family, friends, or members of the community
    - ◆ **Channelized** pattern of movement generated over time between areas

often characterized by economic and/or social connections

- ◆ **Counter** migrants return to their point of origin
- **Cohorts** a group of people, usually of the same age or connected by some other time related characteristic
- **Demographic Momentum** population growth, due to an earlier baby boom, still seen when a population has reached replacement levels of fertility
- ❖ **Population Distribution, Density, and Overpopulation**
  - **Ecumene** habitable areas on the earth's surface; populated areas
  - **Nonecumene** uninhabitable areas of the earth's surface, few people
  - Most people live on a low-lying region of the world close to the 30°N latitudinal line. Population is concentrated in Europe and Southeast Asia (including China, Japan, and India)
  - **Carrying Capacity** theoretical number of people a given area is able to support
  - **Overpopulation** would occur if a population has exceeded the land's carrying capacity
  - **Physiological Population Density** people per unit of arable land
  - **Arithmetic Population Density** people per unit of land
- ❖ *See POPULATION THEORIES/CONCEPTS, RAVENTSTEIN'S LAWS OF MIGRATION, and POPULATION GROWTH THEORIES in the Models/Concepts Section*

## CULTURAL GEOGRAPHY

- ❖ **Cultural Geography** analyzes the spatial context of cultures. This includes language, religion, hearths, folk and pop culture, and the human imprint on the land.
- ❖ **Ethnocentrism** believing one culture (usually one's own) is superior and all other cultures must follow its example
- ❖ **Humans and Culture**
  - **Culture** a people's way of life; developed by a people to meet its fundamental needs
  - **Cultural Pluralism** two or more groups that follow different ways of life within the same region
  - **Cultural Hearth**
    - Early region of cultural innovation

- Origin point; ideas diffuse from this origin to other places around the world
- ❖ **Cultural Components**
  - **Culture Traits** units of learned behavior ranging from the language spoken to the tools used or the games played
  - **Culture Complex** individual cultural traits that are functionally interrelated
  - **Culture Region** a portion of the earth's surface occupied by populations sharing recognizable and distinctive cultural characteristics; basic spatial unit of culture; subjective term
  - **Culture Realm** a set of culture regions showing related culture complexes and landscapes
- ❖ **Cultural Ecology** study of the relationship between a culture group and the natural environment it occupies
  - **Landscape Transformation** when people alter, improve, or destroy the landscape
    - **Cultural Landscape** the imprint of human activity on the land
- ❖ **Roots of Culture** almost all culture originated in that of the hunter gatherers
- ❖ **Cultural Diversity** result of different people moving through different stages of development in different areas at different times
  - Hunters and gatherers gradually became sedentary after the Neolithic Revolution, and societies became predominantly urban after the Industrial Revolution
- ❖ **Cultural Structure/Integration** the interlocking nature of all aspects of a culture
  - **Non-Material Culture** oral traditions, songs, beliefs that are representative of a culture
    - **Ideological Subsystem** ideas, beliefs, and knowledge that builds the ethical and moral base of a culture
      - **Mentifacts** abstract belief systems from the ideological subsystem that are passed down
    - **Sociological Subsystem** the cultural expected patterns of personal relations and class rankings, dependent on a variety of factors and that culture's values
      - **Sociofacts** define the social organization of a culture; part of the sociological subsystem

- **Material Culture** objects shaped or created and used that represent a culture
  - **Technological Subsystem** the material objects that, together with the techniques for their use, enable a culture to survive
    - **Artifacts** tools and other instruments dealing with the Technological Subsystem
- **Cultural Convergence** sharing of artifacts, mentifacts, and sociofacts between two cultures
- ❖ **Culture Change**
  - **Cultural Lag** when a culture is slow to respond/adapt to changing circumstances
  - **Spatial Diffusion** method by which cultural elements are spread
    - **Expansion Diffusion** the element spreads to other areas but remains strong in its hearth region
    - **Contagious Diffusion** the element spreads uniformly outward from its source region
    - **Hierarchical Diffusion** process of spreading the element through tiers
    - **Relocation Diffusion** element is physically and usually intentionally carried from one region to another as a result of migration
    - **Diffusion Barriers** conditions that hinder either the flow of information or the movement of people
  - **Acculturation** adopting some or all of the characteristics of another dominant culture
  - **Syncretism** fusing old and new parts of culture together
- ❖ **Cultural Concepts/Ideas**
  - **Folk Culture** heritage of static, traditional customs of culture, usually specific to a certain group; tends to divide people from one another
  - **Popular Culture** dynamic culture of a mass of people; tends to unify people
  - **Language** organized method of spoken, and usually written, communication
    - **Dialect** recognizable speech variant from the standard version of a language
    - **Pidgin** a simple mixture of basic elements of two (or more) languages
    - **Creole** a pidgin that has evolved to take on more complex grammar and syntax; it has also become the first language of a group
    - **Lingua Franca** established language used for communication between people with incomprehensible native languages

- **Religion** a system of worship of a divine entity, usually contains moral/ethical systems within it
  - **Universalizing Religion** faiths that are applicable to all humans; a religion that actively seeks converts. *ex) Buddhism, Christianity, Islam*
  - **Ethnic Religion** may be recognized as both a religion and as an ethnic group *ex) Hinduism, Judaism, Shintoism*
- ❖ *See CULTURAL CHANGE THEORIES in the Models Section*

## POLITICAL GEOGRAPHY

- ❖ **Political Geography** the spatial study of the organization and distribution of political phenomena (boundaries, voting patterns, distribution of wealth)
- ❖ **Nations and States**
  - **Nation** a group of people with unifying cultural characteristics and a *perceived* homeland
  - **State** a sovereign political unit with government and *boundaries* recognized by outsiders
  - **Nation-State** a state that spatially coincides with a nation
  - **Centripetal Forces** unify the people of a state
    - ◆ **Nationalism** loyalty and identification with one nation or state and its goals, above all others
  - **Centrifugal Forces** promote division within a state
    - ◆ **Regionalism** identification with a minority group and region rather than a state
  - **Colonialism** rule by an outside power; can be direct or indirect.
- ❖ **State Shapes**
  - **Compact** *ex) Uruguay*
  - **Fragmented** *ex) Maldives*
  - **Prorupted** *ex) Thailand*
  - **Perforated** *ex) South Africa*
  - **Elongated** *ex) Chile*
- ❖ **Political Regions and Organizations**
  - **Core Area** a state's foremost center of population, transportation, and economic activity
  - **Unitary State** country with a centralized government and cultural homogeneity
  - **Federal State** country made up of several equal provinces with strong regional governments
  - **Forward-Thrust Capital** a capital deliberately sited away from a state's core to encourage uniform development
  - **International Organization** a

group of associated states whose jurisdiction is secondary to the governments of each individual state

- **Supranational Organization** a group of associated states whose jurisdiction supersedes that of each individual state
- **Shatter Belt** region under continuous stress due to aggressive political or cultural rivalries
- **Choke point** a narrow area such as a strait or an isthmus where people or resources may bottleneck, leading to conflict
- **Enclave** a foreign territory that perforates a larger state
- **Exclave** an outlying portion of one state, usually inside another country
- ❖ **Boundaries**
  - **Natural Boundaries** based on recognizable, natural features of the earth's surface
  - **Artificial (Geometric) Boundaries** partitions that tend to take the form of a straight line
    - ◆ **Antecedent Boundary** drawn before the cultural landscape is put into place
    - ◆ **Subsequent Boundary** drawn after the cultural landscape was put into place
    - ◆ **Consequent Boundary** partition drawn to accommodate cultural or economic differences between countries.
    - ◆ **Superimposed Boundary** forced onto a populated area by an outside power that is unconcerned with preexisting divisions
    - ◆ **Relic Boundary** nonfunctional former partition still marked by landscape features or differences
- ❖ See *GEOPOLITICAL THEORIES in the Models Section*

## AGRICULTURAL GEOGRAPHY

### ❖ Agricultural Revolutions

- **Neolithic Revolution** marked by the domestication of animals and the planting and tending of plants
- **2<sup>nd</sup> Agricultural Revolution** began in Europe with the use of the 3 field system, crop rotation, introduction of new plants to Europe from the Americas and improved technology
- **3<sup>rd</sup> Agricultural Revolution**

- **Green Revolution** the use of hybrid seeds, improvements in management, and technology in order to increase yields
- **Biotechnology** the alteration of DNA/genetic engineering on crops and livestock to increase production levels

### ❖ Rural Agriculture the growing of crops or livestock either for subsistence, or for market sale

- **Subsistence Agriculture** growth of crops in order to sustain oneself
- **Extensive Subsistence Agriculture** involves large plots of land, and small amounts of labor
- **Intensive Subsistence Agriculture** involving smaller plots of land, using a large labor force in an attempt to increase yield
- **Nomadic Herding** migration to allow livestock to feed by foraging
- **Shifting Cultivation (Slash & Burn, Swidden)** clearing of large plots of forest in order to farm on it
- ❖ **Commercial Agriculture** farming in order to sell yields for profit
  - **Intensive Commercial Agriculture** farming that uses small amounts of technological and scientific input for each plot of farmland. Generally applied to crops which have high yields, and a high market demand (fruit, vegetables, dairy)
  - **Extensive Commercial Agriculture** large amounts of land that are not intensively worked upon (wheat, livestock)
  - **Agribusiness** farms as part of corporate units; farms produce for a specific market and are often part of a vertically integrated business; usually leads to the concentration of certain farming activities in specific regions
  - **Collective Farms** cooperative farming, in which producers lose their land, and join large numbers of workers in order to perform different jobs within the collective for the good of the order
  - **State Farms** government-owned farms, run by employees of the state
- ❖ **Settlement Patterns** how people have organized villages and towns in order to engage in agriculture or land survey systems
  - **Clustered Village**
  - **Linear/Street Village**
  - **Village with Commons**
  - **Irregular Village**
  - **Checkerboard Village**

- **Long-Lots** settlement pattern used by the French and Spanish to allow all lots access to a waterway or road
- **Metes and Bounds** system that makes use of natural features to set boundaries, causing very few regular boundaries to be formed
- **Township/Range System** land survey system instituted by the United States and Canada where land was surveyed and divided up using a grid system; provided an orderly way to divide and sell land in the West for settlement
- ❖ See *POPULATION GROWTH THEORIES and ECONOMIC THEORIES in the Models Section*

## INDUSTRIALIZATION AND DEVELOPMENT

- ❖ **Industrialization** the industrial revolution began in the United Kingdom in late 1700s. The root of industrialization was technology. It began with the textile industry. Before the Industrial Revolution manufacturing took the form of cottage industry (manufacturing in the individual home).
  - **Agglomeration** concentration of production or businesses in one area for mutual benefit
  - **Deglomeration** businesses or industries leave an area where they had been concentrated due to technology, increased costs, or competition
  - **Comparative Advantage** a business will produce goods and services that have the greatest ratio of advantage for that area in comparison to other areas; this is based on the assumption that free trade exists
  - **Bulk-Reducing Industry** economic activity in which the final product weighs less than its inputs
  - **Bulk-Gaining Industry** economic activity in which the final product weighs more than its input
  - **Labor Intensive Industry** industry where labor costs are a higher percentage of expense
  - **Fordist Industries** industries where each person is assigned a specific task in an assembly line. Ford was one of the first companies to organize its production in this way early in the twentieth century.
  - **Post Fordist Industries** industries where relatively skilled workers master a wide variety of tasks
  - **Market Equilibrium** the price at which the supply equals the demand

- **Ubiquitous Industries** businesses that are distributed in direct proportion to the distribution of the population
- **Break of Bulk Point** the location at which a good is transferred from one mode of transportation to another
- **Line-Haul Costs** transportation costs for a good
- **Transnational Corporations**

individuals and businesses from a country within a year regardless of whether the individual or business is operated within that country

- **Literacy Rate** measures percentage of people who can read and write
- ❖ See ECONOMIC THEORIES, POPULATION THEORIES/CONCEPTS, SPATIAL ECONOMIC THEORIES, and ECONOMIC SECTORS in the Models Section

that is reliant upon other sectors of the city; it is not self-sufficient

- ❖ **Economic Base**
  - **Basic Sector** the production of goods or services within the city that are exported outside the city
  - **Nonbasic Sector** production of a service for residents within the city, responsible for city maintenance
  - **Multiplier Effect** as a city grows in size, the basic/nonbasic ratio is altered, increasing the number of nonbasic workers.

### DEVELOPMENT INDICATORS

DEVELOPMENT INDICATORS	LESS DEVELOPED COUNTRIES (LDCs)	MORE DEVELOPED COUNTRIES (MDCs)
<b>ECONOMIC</b> - - - - -		
GDP/GNP	Low	High
PPP	Low	High
Income*	Low	High
Productivity Level*	Low	High
Job Types	High % Primary Sector Jobs	High % Tertiary Sector Jobs
Energy Consumption*	Low	High
Technology Level*	Low	High
<b>DEMOGRAPHIC</b> - - - - -		
Literacy Rate	Low	High
Access to Health Care	Low	High
Caloric Intake*	Low	High
Nutrition	Unbalanced	Balanced (possible obesity)
<b>SOCIAL</b> - - - - -		
Life Expectancy	Low	High
Infant Mortality	High	Low
Dependency Ratio	High	Low
Population Growth	High	Low
<b>RELATED MODELS</b> - - - - -		
Demographic Transition	Early Stages	Later Stages
Rostow's Model	Early Stages	Later Stages
World Systems Model	Periphery	Core

\*indicates a "per capita" measure

- ❖ **Urban Hierarchy** ranking of cities on a scale
  - **Rank-Size Rule** a pattern observed in some countries where the  $n$ th largest city is  $1/n$  the size of the largest city
  - **Primate City** one city is much larger than the size of the next largest and clearly dominates a country's urban hierarchy
  - **World Cities** (New York, London, and Tokyo) international urban centers that are the core of global trade and finance

- ❖ **Urban Ideas**
  - **Gentrification** process of revitalizing an area of a city to make it more attractive to the middle and upper classes
  - **Ghettoization** the result of racial or economic prejudices that force people (overtly or otherwise) to live in certain sections of a city
  - **Edge City** an area on the fringe of a city with more office space and jobs than residents. It may compete with or replace functions in the main city's CBD.

- ❖ See URBANIZATION MODELS/CONCEPTS and SPATIAL ECONOMIC MODELS in the Models Section

2009-2010

(**Multinational corporations**) operates factories in countries other than the one in which its main headquarters are located

- **Trading Bloc** group of countries near each other that promote trade amongst themselves; barriers may be placed on other trading blocs

- ❖ **Development** a comparative term measuring the extent to which a country's raw materials have been fully utilized/developed.

- **PPP (Purchasing Power Parity)** number used by the World Bank; measures value of a country's money in relation to what can be purchased with that amount
- **GDP (Gross Domestic Product)** measures the total value of goods and services produced within a country in a year
- **GNP (Gross National Product)** measures the total value of goods and services produced by

- ❖ Additionally, see the DEVELOPMENT INDICATORS CHART above

### CITIES AND URBAN LAND USE

- ❖ **City/Town** a cluster of people in a "nucleated settlement." A city contains a Central Business District, residential sectors, and, depending on the city, commercial sectors, government sectors, and industrial sectors. Cities perform functions. They interact with the region around them and other cities; additionally, their location is often politically, economically, or socially strategic. For example, cities located at break-of-bulk points take advantage of the economic options of the area.
  - **Conurbation (Megalopolis)** a series of cities that have grown into one urban area over time
    - ◆ **Ex** Washington D.C. – Boston corridor
  - **Suburb** a residential, industrial, or commercial –specialized area of a city